



# Tesuque Community Plan Public Meeting

---

Wednesday 27 July 2022

# Agenda

---

1. Group Welcome and Introductions (5 min)
2. Purpose and Background of the Tesuque Plan Process (10 min)
3. Overview of the Draft 2022 Plan (15 min)
4. Open House Q&A (60 min)
5. Adjourn



# Introductions

---

- ❖ Santa Fe County Staff
- ❖ Tesuque Planning Committee



# Plan Initiation

---

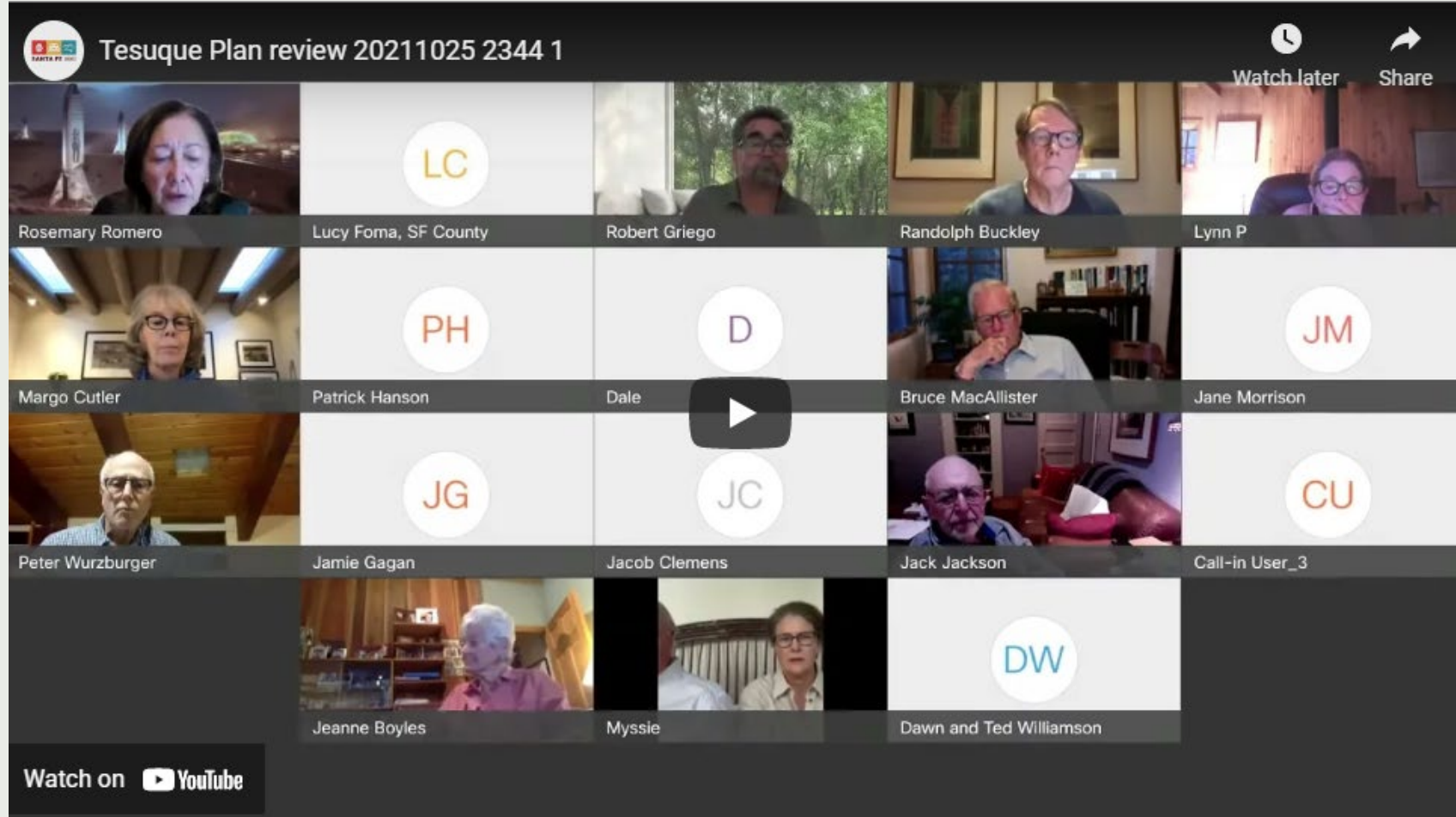
- ❖ Process initiated by Board via Resolution 2019-147 to update 2013 Tesuque Community Plan
- ❖ Planning process established in accordance with the County Sustainable Growth Management Plan (SGMP) and Sustainable Land Development Code (SLDC).
- ❖ Purpose for Plan initiation:
  - ❖ Provide consistency between Tesuque Community District Plan and County SGMP for Tesuque and provide basis for amendments to the Community District Overlay in the SLDC.



# Plan Purpose

---

- ❖ Clarify location for non-residential uses as identified in the Rural commercial overlay areas as the Village center and Tesuque Village Road
- ❖ Aligned land use category names with County's standard land use categories
- ❖ Removal of regulatory language
- ❖ Updated demographics and trends
- ❖ Updated and modified policy regarding fence and wall heights and setbacks
- ❖ Plan Reorganization
- ❖ Agriculture and Acequia Section modification

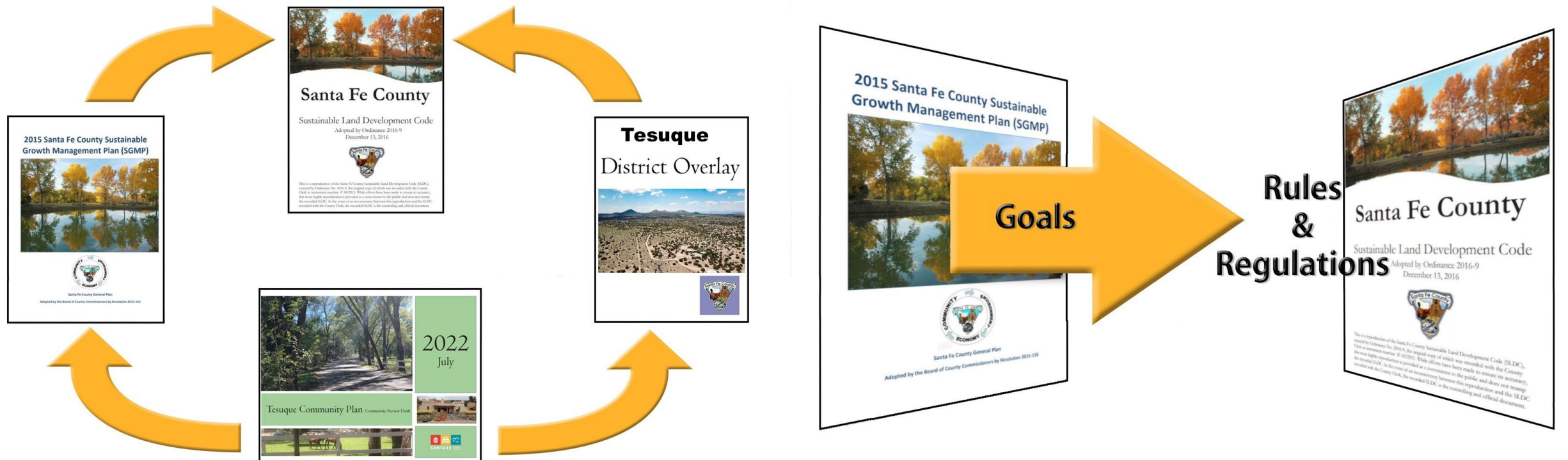


# Planning Committee Process

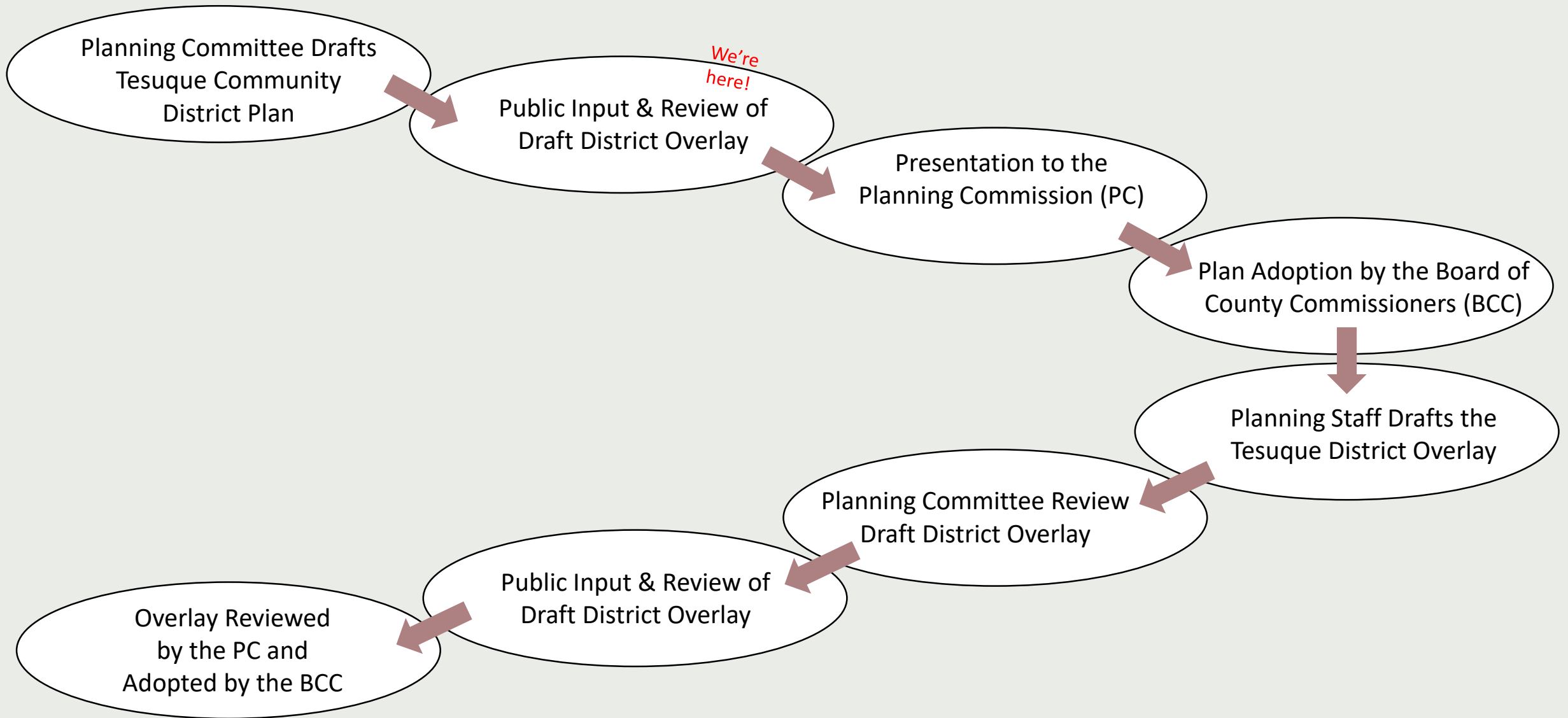
- Spring 2019-to-Spring 2020  
In person meetings
- Summer 2020-to-Present  
Virtual meetings



# Plan Context



# Plan Implementation Process



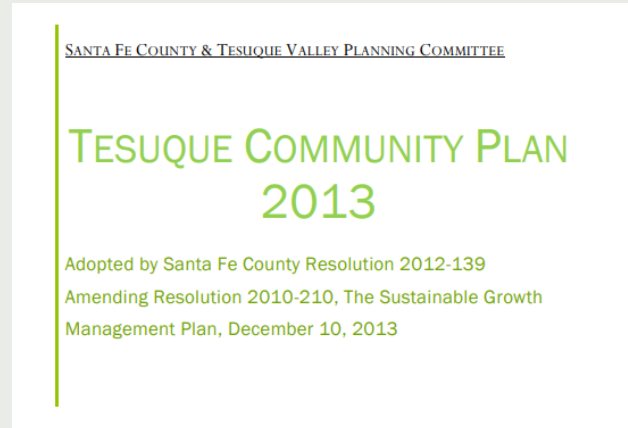


# Tesuque Plan Background

## 2000 Rio Tesuque Community Plan

The Rio Tesuque Community Land Use Plan was adopted by the Board of County Commissioners by resolution 2000-165 as an amendment to the County Growth Management Plan in 2000.

## 2013 Tesuque Community Plan



## 2022 Tesuque Community Plan





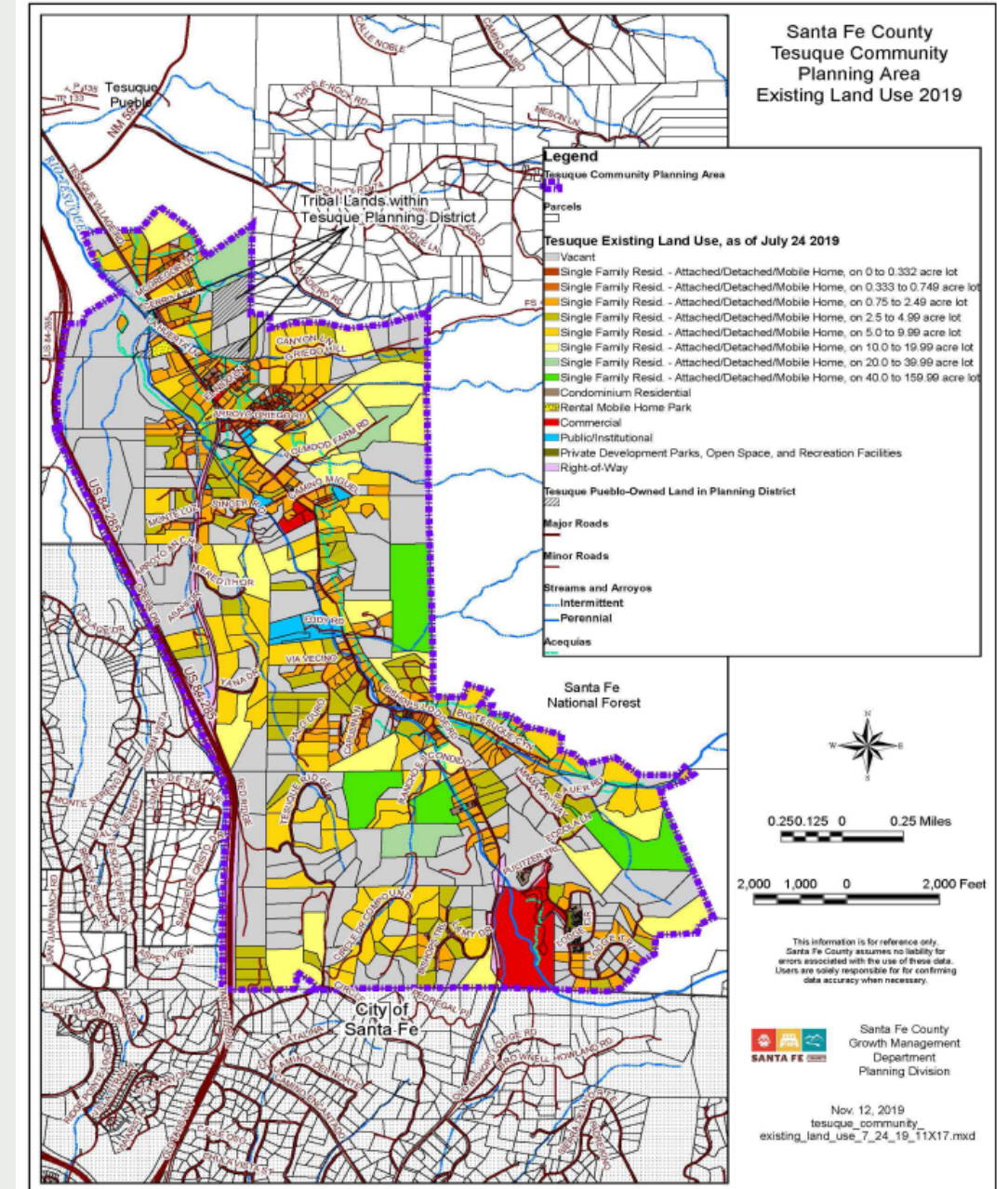
# 2022 Draft Community Plan

---

- ❖ Section I. Plan Context
- ❖ Section II. Plan Elements
- ❖ Section III. Land Use Plan

# Section I. Plan Context

- ❖ Tesuque Community District
- ❖ Existing Land Use Map
- ❖ Community Vision
- ❖ Challenges & Opportunities
  - Flooding
  - Wildfire Issues
  - Aamodt Settlement
  - Road Safety Study
  - Open Space & Trails



# Community Vision

***“Tesuque Village seeks sustainable growth that protects our natural and historic resources, while preserving our values, qualities, and culture for the benefit of future generations. Tesuque seeks to retain its status as a traditional historic community by maintaining its character as a small village with roots in agriculture that go back to the ancestors of the Pueblo of Tesuque. The village is primarily residential, ethnically diverse, and with land use codes that accommodate both historic land use and single family properties. We acknowledge that the village occupies the ancestral lands of the people of the Pueblo of Tesuque.”***



# Section II. Plan Elements

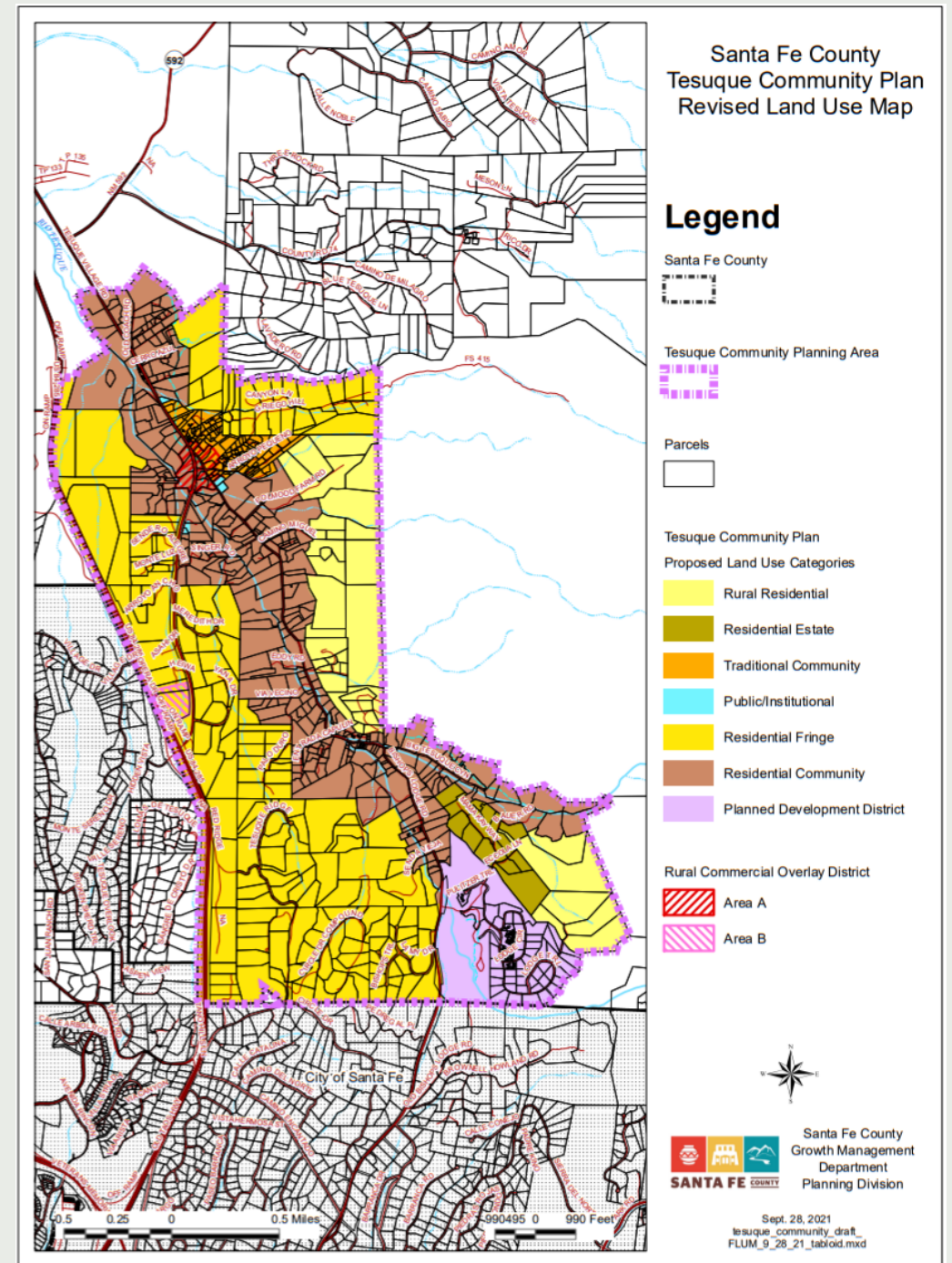
- ❖ Agriculture, Acequias, & Riparian Areas
- ❖ Bishops Lodge Corridor & Roads
- ❖ Social Trails
- ❖ Public Access to Forest Land & Trails
- ❖ Fire Safety & Prevention
- ❖ Community Facilities
- ❖ Water Supply & Wastewater Treatment





# Section III. Land Use Plan

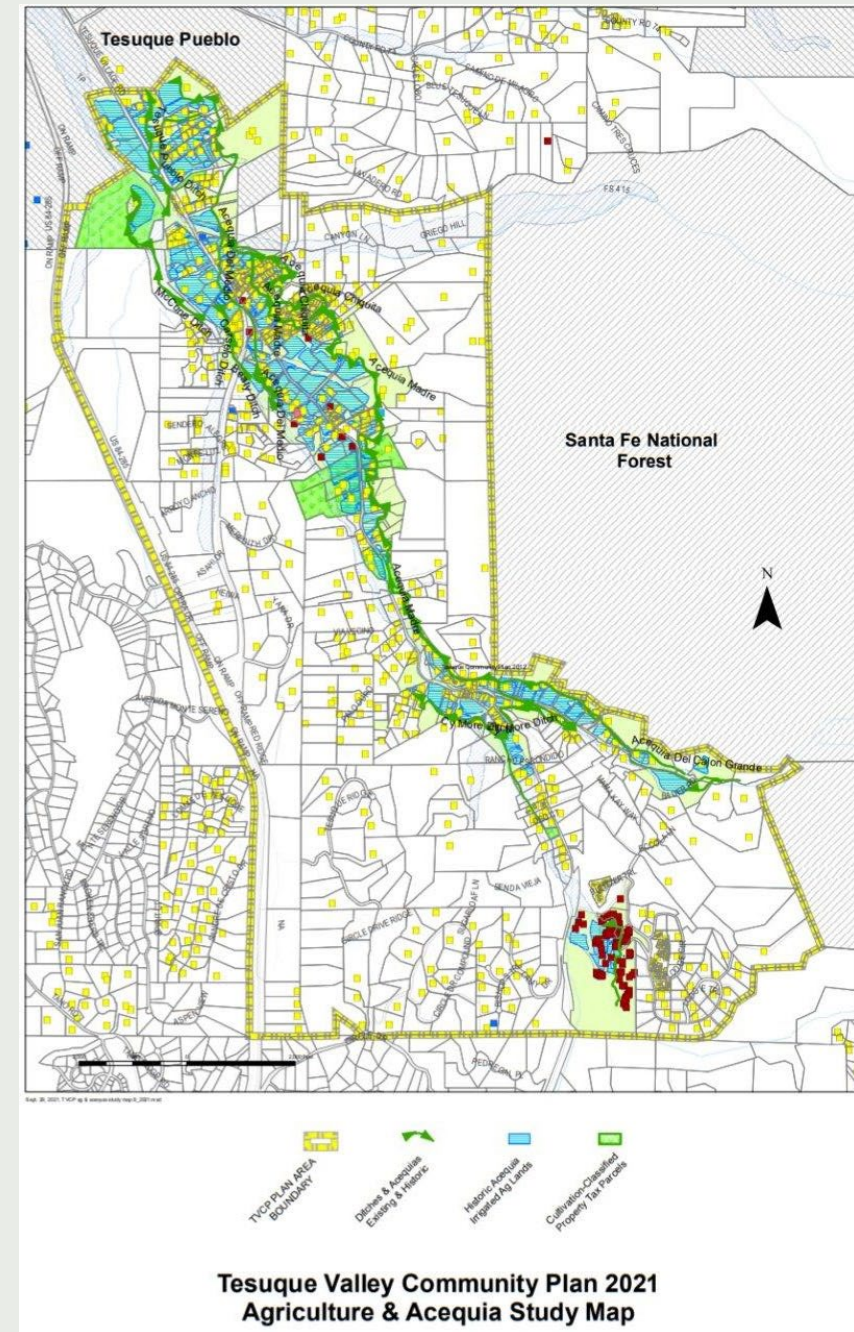
- ❖ Revised Land Use Map
- ❖ Land Uses, Densities & Development Patterns
- ❖ Land Use Categories
- ❖ Identified Improvement Activities





# *Identified Improvement Activities:* Environment

- ❖ Agriculture, Acequias, & Riparian Areas
- ❖ Drainage & Erosion
- ❖ Fire Safety & Prevention
- ❖ Wildlife Crossings & Corridors



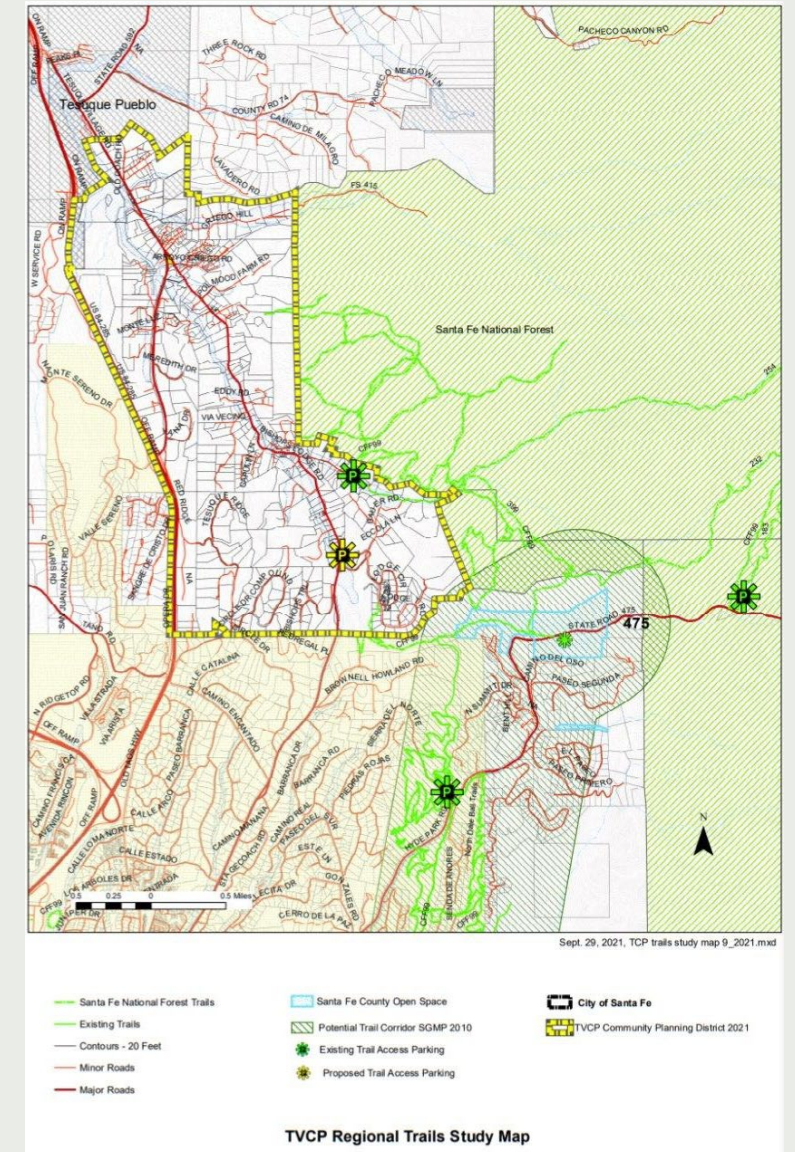
# *Identified Improvement Activities:*

## Land Use

- ❖ Addressing Abandoned Buildings
- ❖ Bishops Lodge Corridor
- ❖ Fences & Walls
- ❖ Code Enforcement
- ❖ Community Facilities
- ❖ Home Occupation
- ❖ Lot Coverage

# *Identified Improvement Activities:* Transportation & Trails

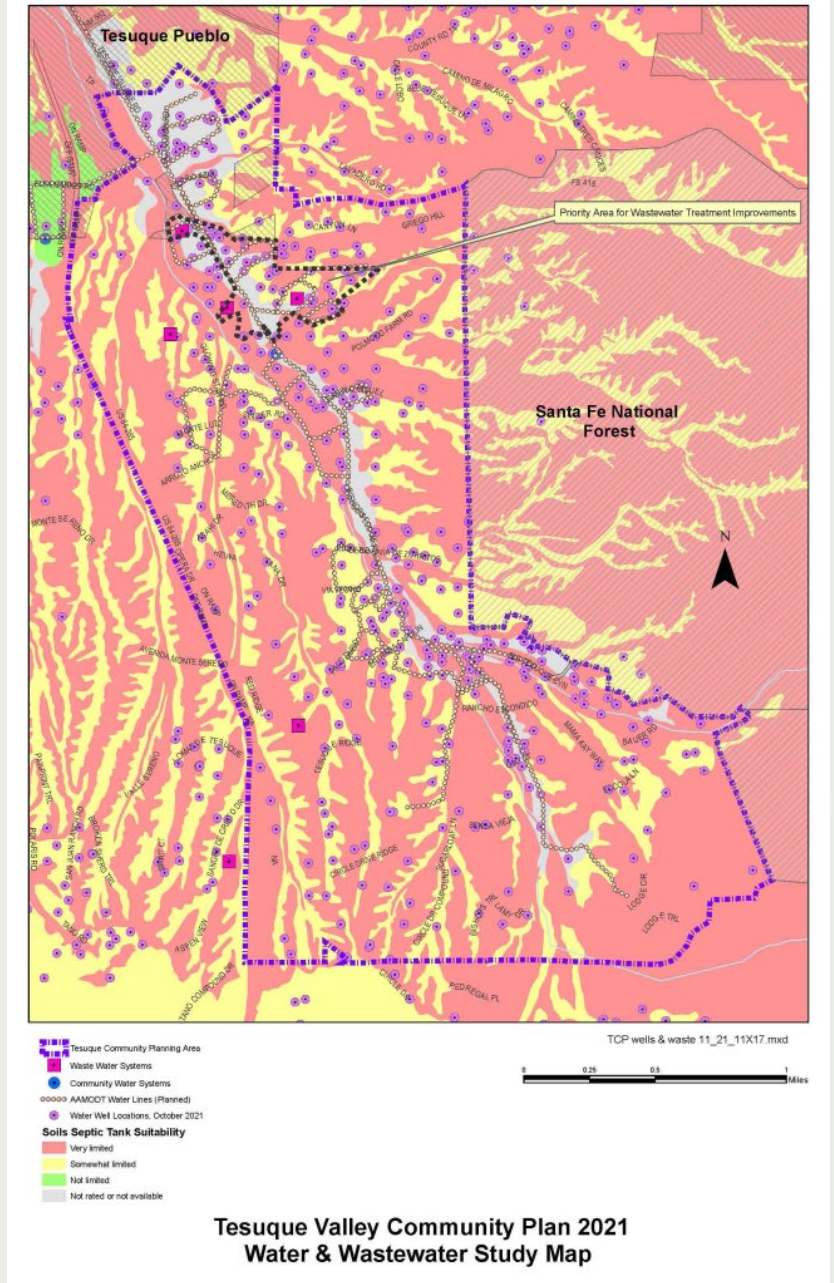
- ❖ Trailhead Parking Area
- ❖ Bike Routes & On-Road Bike Lanes
- ❖ Dangerous Curves and Driveways
- ❖ Tesuque Village Markers and Historic Markers
- ❖ Village Core Pedestrian Circulation
- ❖ Public Access to Forest Lands & Trails
- ❖ Regional Transit Stop
- ❖ Transition Zones – Slowing Traffic Down





# *Identified Improvement Activities:* Utilities

- ❖ Bishops Lodge Corridor & the Aamodt Settlement
- ❖ Water & Wastewater



# Road Safety Study: Tesuque Village Roads

- ❖ Tesuque Village Road Safety Assessment project
- ❖ Hybrid Public Meeting: Thursday, August 25, 2022 from 4:00pm to 5:30pm
- ❖ See website for more meeting invite information

# Questions? Comments?

---

❖ Ask us here!

OR

❖ Please send any feedback to [ncrail@santafecountynm.gov](mailto:ncrail@santafecountynm.gov)  
by August 1<sup>st</sup> via the Comment Form